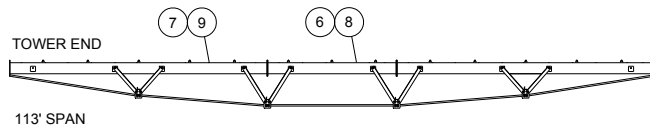
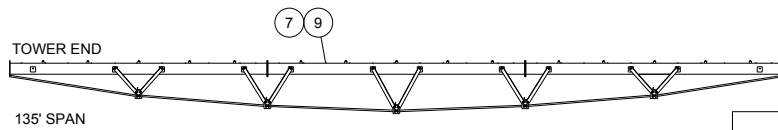
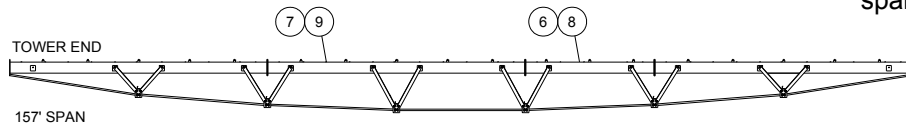
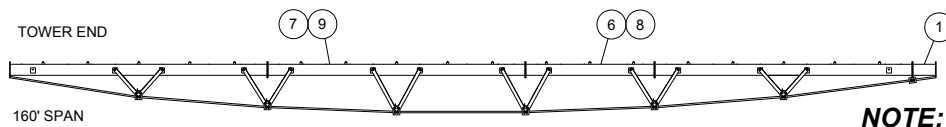
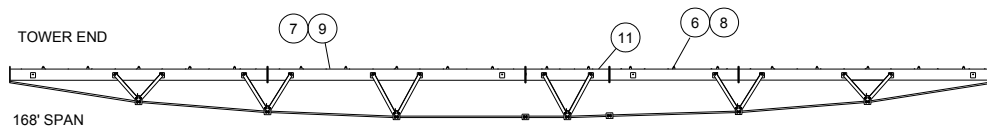
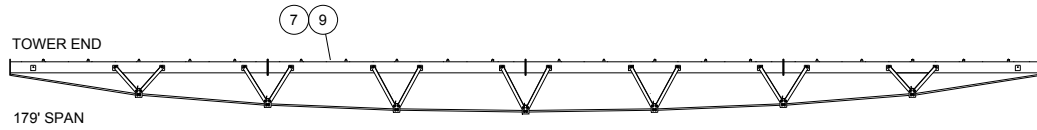
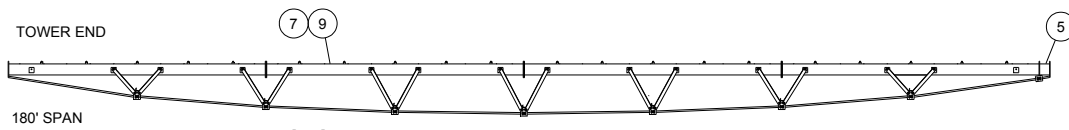
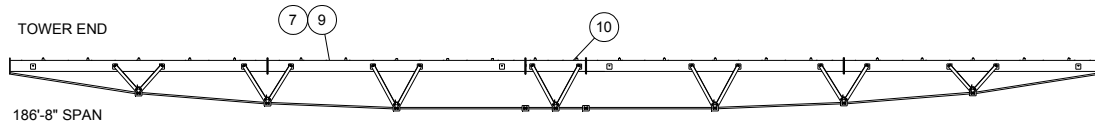
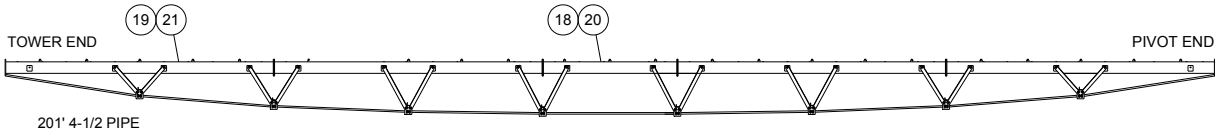


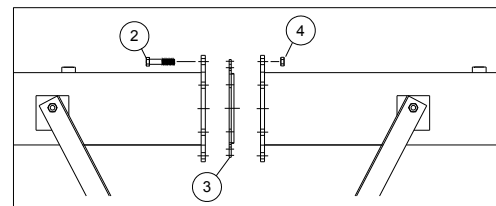


# Pivot Spans

## Spans, 5-9/16" Pipe



**NOTE:** See page C-25 for span extension truss rods.



**NOTE:** Item 10 requires 4 of 03-6711-0 and 1 of 03-6715-1 (see page C-24).



## Pivot Spans

Ref.	Original Part No.	Substitute Part No.	Description
1	03-8245-7		Pipe, 5-9/16" x 3' Extension
2	06-0803-4		Screw, 3/8-16 x 1-1/2", Hex, Gr. 5
3	06-3285-1		Gasket, Flange, 5-9/16"
4	06-3419-6		Nut, 3/8-16, Flange, Toplock
5	11-0039-5		Pipe, 5-9/16" x 1' Extension
6	11-3650-6		Pipe, Half, 5-9/16", 90" Outlets
7	11-3651-4		Pipe, Span, 5-9/16", 90" Outlets
8	11-3652-2		Pipe, Half, 5-9/16", 30" Outlets
9	11-3653-0		Pipe, Span, 5-9/16", 30" Outlets
10	11-4776-8		Pipe, 5-9/16" x 7' 8" Extension
11	11-8243-5		Pipe, 5-9/16" x 11' Extension
12	03-0679-5		Flange, Pipe, 5-9/16", w/Slot
13	03-1155-5		Kit, Hardware, 5-9/16", 201' Span
14	03-1154-8		Kit, Hardware, 5-9/16", 179' Span
15	03-1153-0		Kit, Hardware, 5-9/16", 157' Span
16	03-1152-2		Kit, Hardware, 5-9/16", 135' Span
17	10-0622-0		Kit, Hardware, 5-9/16", Span Ext.
18	12-3005-0		Pipe, Weld, Half, 5-9/16", 90"
19	12-3006-0		Pipe, Weld, Span, 5-9/16", 90"
20	14-4856-0		Pipe, Weld, Half, 5-9/16", 30"
21	14-4857-0		Pipe, Weld, Span, 5-9/16", 30"