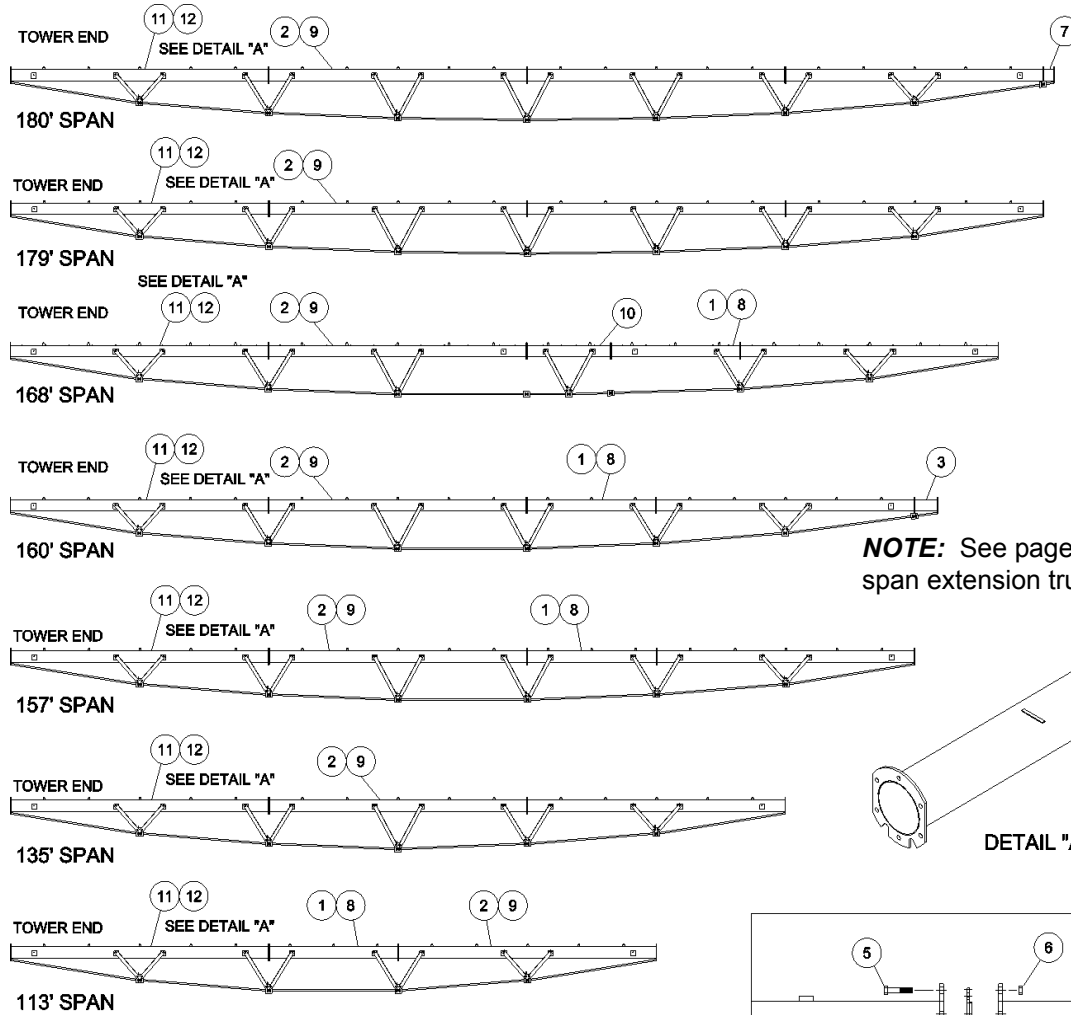


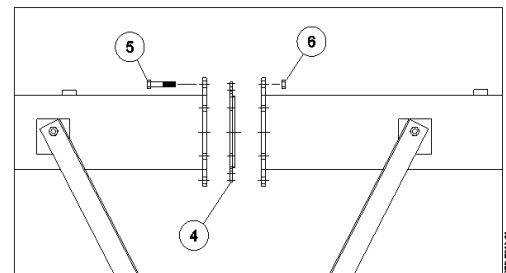
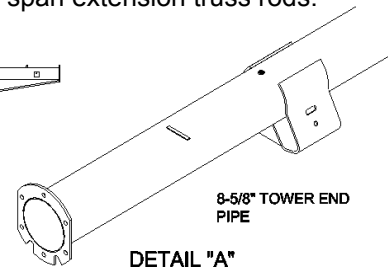


# Pivot Spans

## Spans, 8-5/8" Pipe



**NOTE:** See page C-25 for span extension truss rods.



Ref.	Original Part No.	Substitute Part No.	Description
1	14-3717-0		Pipe, Half, 8-5/8", 30" Outlets
2	14-3716-0		Pipe, Span, 8-5/8", 30" Outlets
3	14-3722-0		Pipe, 36" x 8-5/8", Span Ext.
4	14-3711-0		Gasket, Flange, 8-5/8"
5	06-0807-5		Screw, 5/8-11 x 2", Hex, Gr. 5
6	06-2416-3		Nut, 5/8-11, Lock
7	14-4326-0		Pipe, 8-5/8" x 1' Span Ext.
8	14-3713-0		Pipe, Half, 8-5/8", 90" Outlets
9	14-3712-0		Pipe, Span, 8-5/8", 90" Outlets

Ref.	Original Part No.	Substitute Part No.	Description
10	16-0010-6		Pipe, Extension, 8-5/8" x 11'
11	14-3718-0		Pipe, Tower End, 8-5/8", 30"
12	14-3714-0		Pipe, Tower End, 8-5/8", 90"
13	14-3710-0		Flange, Pipe, 8-5/8", w/Slot
14	16-0017-1		Kit, Hardware, 8-5/8", 179' Span
15	14-8975-0		Kit, Hardware, 8-5/8", 157' Span
16	16-0017-0		Kit, Hardware, 8-5/8", 135' Span
17	16-0017-2		Kit, Hardware, 8-5/8" Span Ext.