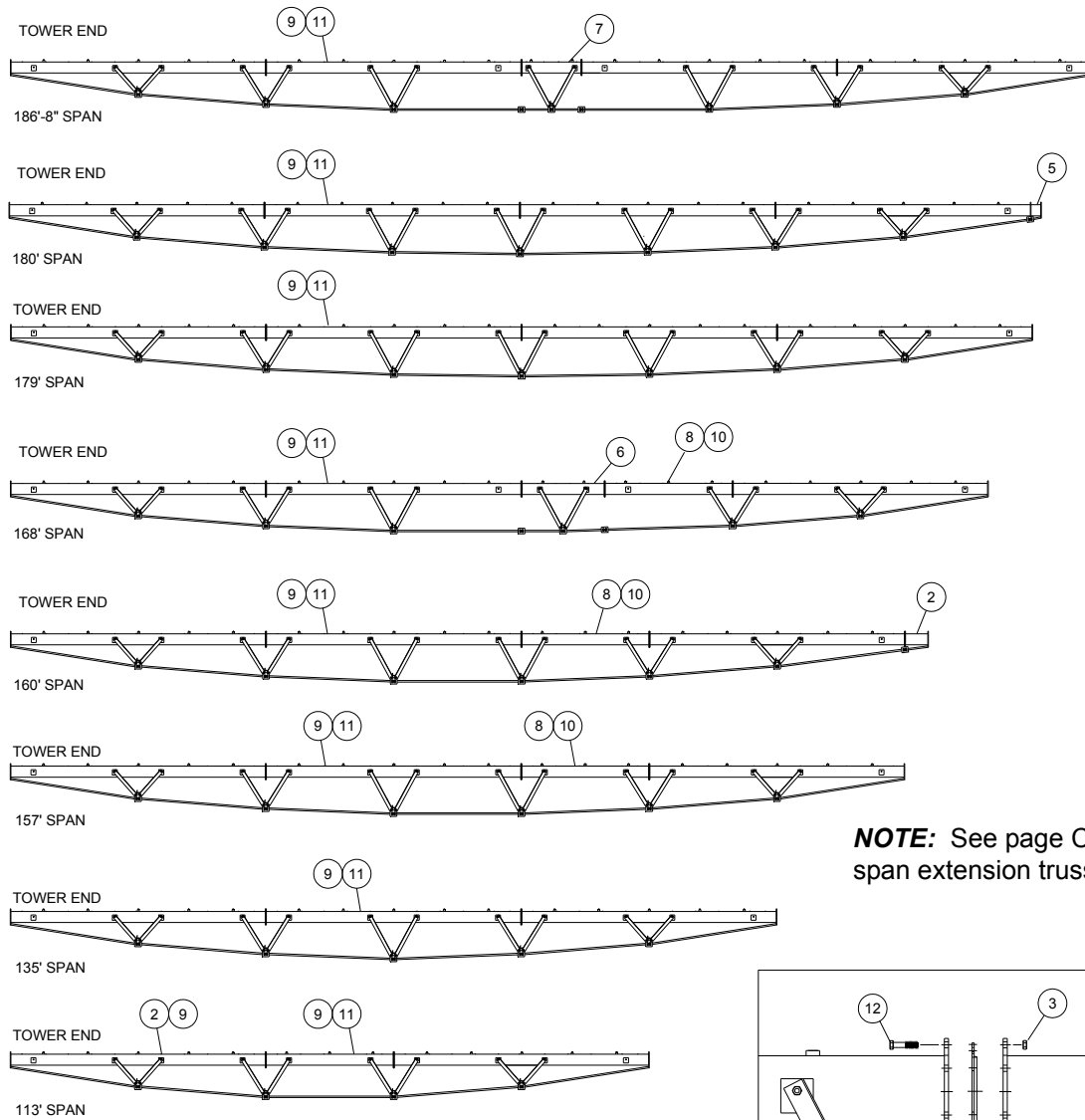
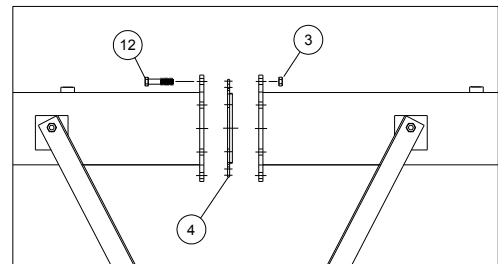


Pivot Spans

Spans, 6-5/8" Pipe



NOTE: See page C-25 for span extension truss rods.



NOTE: Item 7 requires 4 of 03-6711-0 and 1 of 03-6715-1 (see page C-8).

Ref.	Original Part No.	Substitute Part No.	Description
1	03-0708-2		Flange, Pipe, 6-5/8", w/Slot
2	03-8242-4		Pipe, 6-5/8" x 3' Extension
3	06-2418-9		Nut, 1/2-13, Lock
4	06-4486-4		Gasket, 6-5/8", Pipe Flange
5	11-0037-9		Pipe, 6-5/8" x 1' Extension
6	11-3658-9		Pipe, 6-5/8" x 11' Extension
7	11-3659-7		Pipe, 6-5/8" x 7' 8" Extension
8	11-3355-2		Pipe, Half, 6-5/8", 30" Outlets
9	11-3356-0		Pipe, Span, 6-5/8", 30" Outlets

Ref.	Original Part No.	Substitute Part No.	Description
10	11-3648-0		Pipe, Half, 6-5/8", 90" Outlets
11	11-3649-8		Pipe, Span, 6-5/8", 90" Outlets
12	26-0760-4		Screw, 1/2-13 x 1-1/2", Hex, Gr. 5
13	03-0096-2		Kit, Hardware, 6-5/8", 201' Span
14	03-0095-4		Kit, Hardware, 6-5/8", 179' Span
15	03-0094-7		Kit, Hardware, 6-5/8", 157' Span
16	03-0089-7		Kit, Hardware, 6-5/8", 135' Span
17	10-0623-8		Kit, Hardware, 6-5/8" Span Ext.