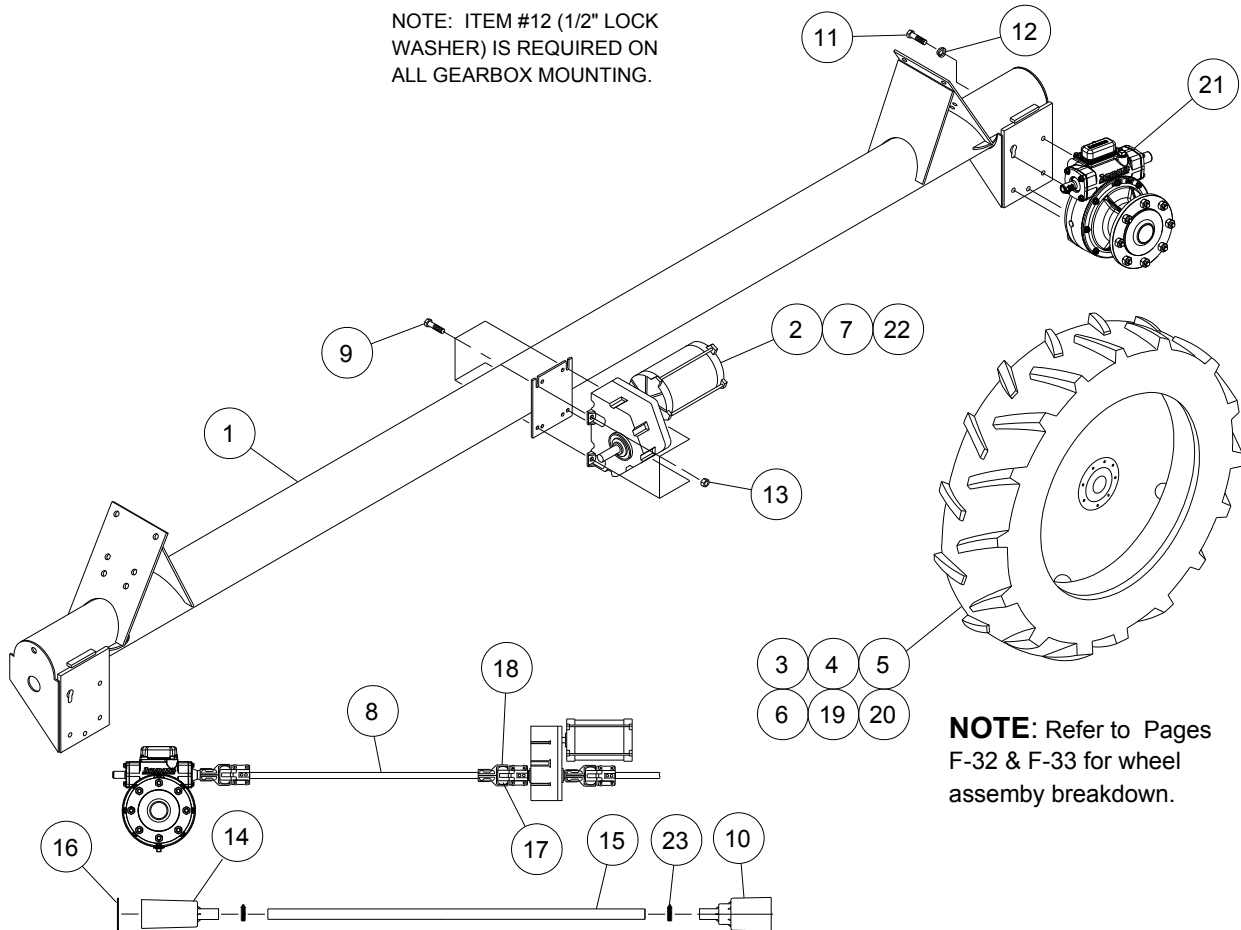




Tower/Drive Tube Assembly

Drive Tube Assembly, Non-Towable

NOTE: ITEM #12 (1/2" LOCK WASHER) IS REQUIRED ON ALL GEARBOX MOUNTING.



NOTE: Refer to Pages F-32 & F-33 for wheel assembly breakdown.

Ref.	Original Part No.	Substitute Part No.	Description
1	03-0758-7		Frame, Drive Tube, Solid Mount
2	03-4184-2		Motor Assy, LCD, 3/4 HP, 43 RPM
3	03-4840-9		Wheel Assy, 11.2 x 24", Right
4	03-4841-7		Wheel Assy, 11.2 x 24", Left
5	03-4842-5		Wheel Assy, 14.9 x 24, Right
6	03-4843-3		Wheel Assy, 14.9 x 24, Left
7	03-4984-5		Motor Assembly, 1 HP, 30 RPM
8	04-0716-3		Shaft, Drive, 7/8", 59-1/4"
9	06-3415-4		Screw, 3/8-16 x 1-1/4" Hex, Gr. 5
10	06-3589-6		Bell, Drive Shaft End
11	06-0804-2		Screw, 1/2-13 x 1-1/4", Hex, Gr. 5
12	06-0814-1		Washer, Lock, 1/2"

Ref.	Original Part No.	Substitute Part No.	Description
13	06-3419-6		Nut, 3/8-16, Hex, Flange
14	06-4378-3		Bell, Drive Shaft End
15	06-4442-7		Tube, Drive Shaft, 1-1/2" x 54"
16	14-9301-0		Washer, Drive Shaft Bell
17	10-0433-2		Insert, Drive Shaft Coupler
18	10-0435-7		Coupler, Kit, 7/8" Drive Shaft
19	11-5491-3		Wheel Assy, 11 x 22.5, R, Recap
20	11-5492-1		Wheel Assy, 11 x 22.5, L, Recap
21	13-9953-0		Gearbox, AT, Non-Tow
22	12-5327-0		Motor Assy, Lind. CD, 1 HP, 59 RPM
23	26-1091-3		Clamp, Hose, Worm Drive