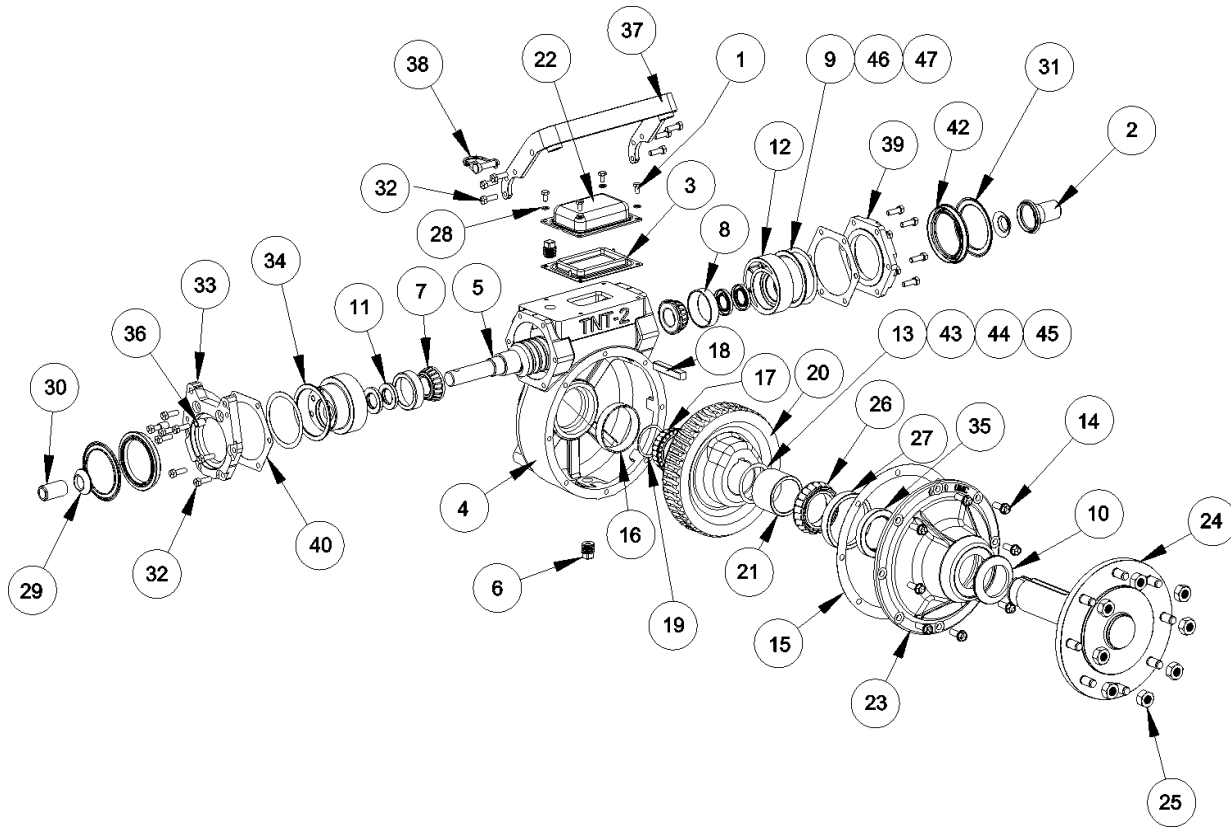




# H Gearboxes

## Gearbox, 2-1/4", Tow, Non-Tow, 14-5230-0



Ref.	Original Part No.	Substitute Part No.	Description
1	12-1732-0		Screw, Hex, Cap, 1/4-20 x .5 LG.
2	11-1225-9		Guard, Shaft, Made in China
3	06-4667-9		Diaphragm, Rubber (Stamp Cover)
4	14-9071-0		Housing, LW 725, TNT-2
5	11-7907-6		Worm, TNT 50:1
6	06-3577-1		Plug, Pipe, 1/2", Square Head
7	06-3812-2		Cone, Bearing, 1.1875 I.D.
8	06-3813-0		Cup, Bearing, 2.5312 O.D.
9	11-7908-4		Shim, Input, .006"
10	14-5277-0		Seal Saver 2.25 Shaft
11	11-7912-6		Seal, Oil, Dbl. Lip, 1 x 1.752x .25
12	14-9050-0		End Cap TNT-2
13	11-5934-2		Shim, Output, .006"
14	06-2221-7		Screw, Hex, Flange, 3/8-16 x 1
15	12-0449-0		Gasket, Cover
16	06-4686-0		Bearing, Cup, 3.25 O.D.
17	06-2104-5		Bearing, Cone, 2.00 I.D. SPL
18	11-2561-6		Key, 1/2" Sq. x 2.88 L.
19	06-2109-4		Ring, Snap, 1.88 O.D.
20	11-2557-4		Gear, Universal, 50:1, 2-1/4" I.D.
21	14-9065-0		Spacer, TNT-2, 1.99 L.
22	06-4662-0		Cover, TNT Expan. Chamber
23	14-5272-0		Cover, Gearbox, 2.25", Universal

Ref.	Original Part No.	Substitute Part No.	Description
24	11-7934-0		Shaft, Assy, Out. Weld, 2-1/4"
25	06-2154-0		Nut, Lug 9/16-18, ZN Plate
26	11-2558-2		Bearing, Cone, 2.25 I.D.
27	11-2559-0		Bearing, Cup, 3.8125 O.D.
28	06-1510-4		Washer, Lock, Hel. Spring 1/4"
29	11-5985-4		Seal, Shaft Face, Rubber, 1"
30			Cover, PVC Shaft 50mmx1.75"
31	14-9056-0		Cover, Dust, TNT-2
32	11-9417-0		Screw, Hx, Cap, 5/16-8x1, GR5
33	14-9051-0		End Plate, Std. TNT
34	11-7918-3		Washer, Bearing TNT
35	14-9057-0		Seal, Oil, Triple Lip, 2.25x3.251
36	14-9054-0		Stop, Handle
37	14-9053-0		Handle, TNT-2
38	11-7928-0		Pin, Lock, 3/8x1-3/8 L.
39	14-9052-0		End Plate, Hex, TNT-2
40	14-9072-0		Gasket, End Plate, TNT-2
41			
42	14-9055-0		Seal, Oil, 3x3.751x.375 Flange
43	11-5935-9		Shim, Output, .010
44	11-5936-7		Shim, Output, .015
45	11-5937-5		Shim, Output, .020
46	11-7909-2		Shim, Input, .020
47	11-7910-0		Shim, Input, .012