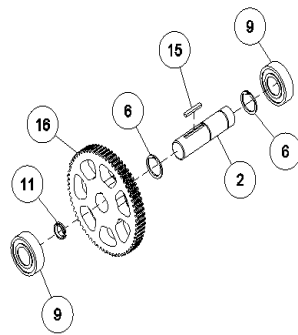


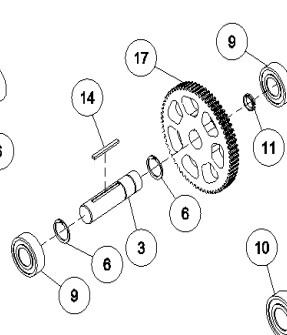
# Center Drives

## Center Drive Gearbox Assemblies

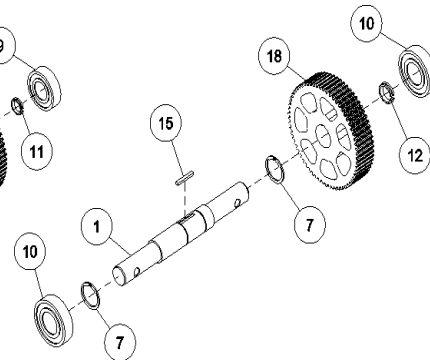
**NOTE:** Order parts only, assemblies not available.



SHAFT ASSEMBLY, 2ND

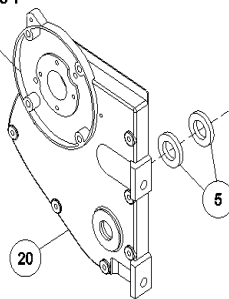


SHAFT ASSEMBLY, 3RD



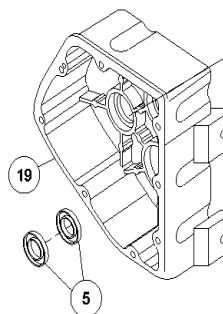
SHAFT ASSEMBLY OUTPUT

APPLY SEALANT P/N 06-3876-7 OR EQUIVALENT



COVER ASSEMBLY

GEARBOX OIL: REFER TO SECTION: LINDSAY GEARBOX OIL REPLACEMENT



HOUSING ASSEMBLY

Ref.	Original Part No.	Substitute Part No.	Description
1	03-4081-0		Shaft, Output, Center Drive, 1"
2	03-4082-8		Shaft, 2nd, Center Drive, 1"
3	03-4083-6		Shaft, 3rd, Center Drive, 1"
4			
5	06-2106-0		Seal, Grease, GB, C/R, #9998
6	06-3099-6		Ring, Ret., Inverted Ext., 1"
7	06-3100-2		Ring, Ret., Inverted Ext., 1-3/16"
8			
9	06-3102-8		Bearing, Ball, 6205, 0.984 I.D
10	06-3103-6		Bearing, Ball, 6206, 1.181 I.D.

Ref.	Original Part No.	Substitute Part No.	Description
11	06-3106-9		Ring, Load, 25mm Shaft
12	06-3107-7		Ring, Load, 30mm Shaft
13			
14	06-3114-3		Key, 1/8 x 3/16x 1-15/16", Heat Treat
15	06-3115-0		Key, 1/8 x 3/16x 1-1/4", Heat Treated
16	06-3130-9		Gear, Spur, Center Drive 2nd
17	06-3131-7		Gear, Spur, Center Drive 3rd
18	06-3132-5		Gear, Spur, Center Drive 4th
19	10-4666-3		Housing, Center Drive, Machined
20	10-4668-9		Cover, Center Drive, Machined