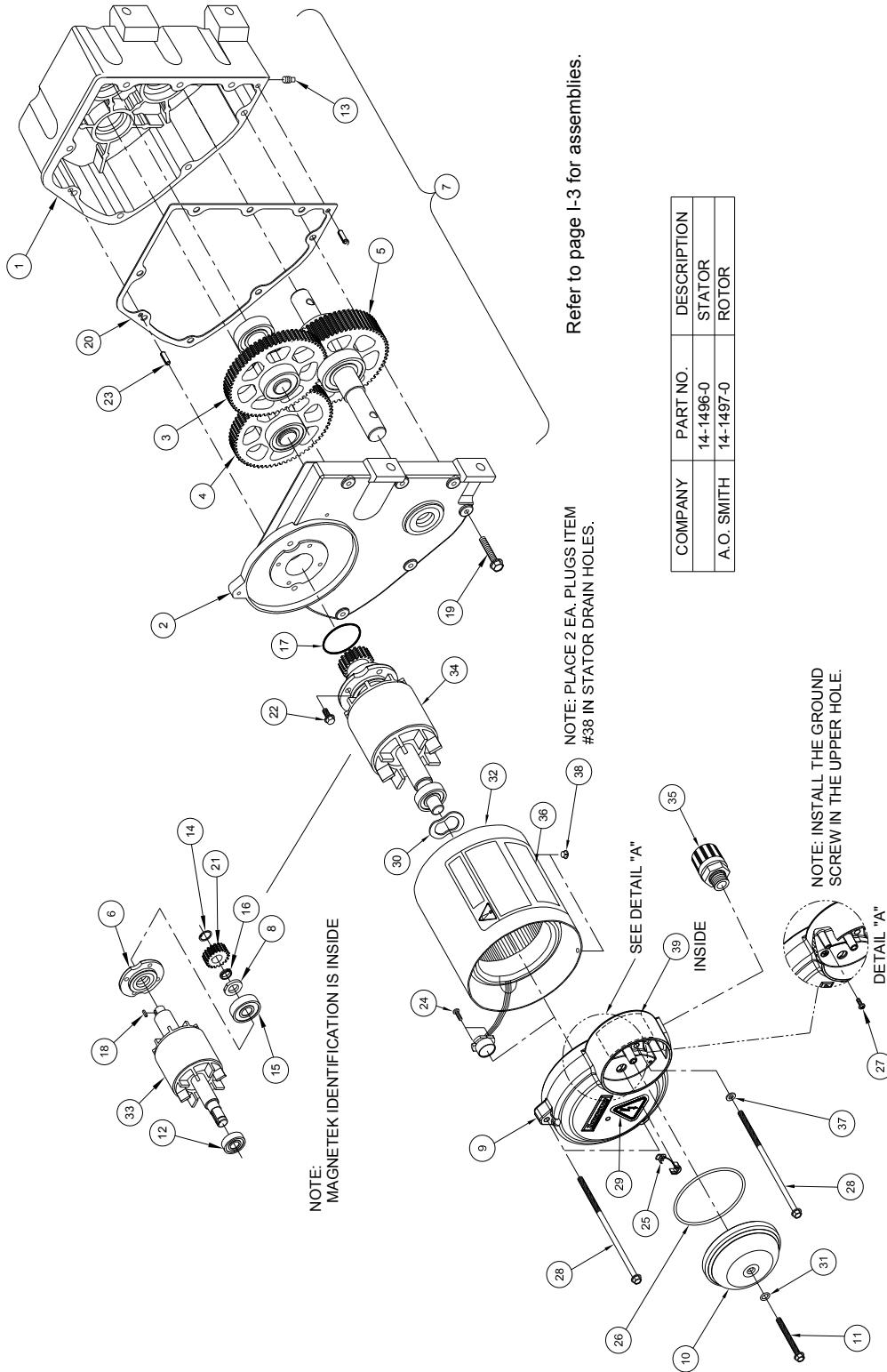




Center Drives

Center Drive Assembly, 3/4 HP, 43 RPM, 380/460, 10-9540-5



Refer to page I-3 for assemblies.

COMPANY	PART NO.	DESCRIPTION
A.O. SMITH	14-1496-0	STATOR
	14-1497-0	ROTOR



Center Drives

Center Drive Assembly, 3/4 HP, 43 RPM, 380/460, 10-9540-5 (cont'd.)

Ref.	Original Part No.	Substitute Part No.	Description
1	MP	Note	Housing Assembly
2		Note	Cover Assembly
3		Note	Shaft Assembly, 2nd
4		Note	Shaft Assembly, 3rd
5		Note	Shaft Assembly, Output
6		Note	Retainer Assembly, Seal, Center Drive
7		Note	Gearbox Assembly
8	3-4182-6		Spacer, Center Drive
9	14-4914-0		Bracket, Motor, Lindsay
10	14-4916-0		Cover, Conduit Box, Center Drive
11	14-4920-0		Clamp, Grommet, Motor Bracket
12	6-0987-5		Bearing, Ball, 620 3LLU
13	6-2103-7		Plug, Pipe, Sq. Head, 3/8"
14	6-3098-8		Ring, Ret., Inverted Ext., 3/4"
15	6-3104-4		Bearing, Ball, 6304LLU
16	6-3105-1		Ring, Load, 3/4" Shaft
17	6-3109-3		O-Ring, 2" I.D. x 2-1/8" O.D.
18	6-3112-7		Key, 1/8 x 3/16 x 5/8", Heat Treated
19	6-3120-0		Screw, 5/16-18 x 1-3/4", Special
20	6-3128-3		Gasket, Center Drive Cover
21	6-3129-1		Gear, Spur, Center Drive 1st
22	6-3148-1		Screw, 1/4-20 x 5/8", Hex, Gr. 5, LW
23	6-3195-2		Pin, Spring, .25" x .75", PLM
24	6-3249-7		Screw, 8-32 x 5/8", Pan, Head
25	14-4919-0		Grommet, Motor End Bkt., Lindsay CD
26	14-4917-0		Screw, #10-32 x 7/16 PPH
27	6-3297-6		Screw, #10-32 x 7/16 PPH, Tyc, Green
28	6-3300-8		Screw, 1/4-20 x 8-11/16", HWH
29	11-7354-1		Gasket, Conduit Box Cover, C.D.
30	6-3342-0		Washer, Wave, 1-3/16 I.D. x 1-9/16" O.D.
31	14-4918-0		Screw, 1/4-20 x 5/8"
32	14-1496-0		Stator, 3/4 HP, 50HZ, 1800 RPM, 08F
33	14-1497-0		Rotor, 3/4 HP, 50HZ, 1800 RPM, 08F
34	11-4252-0		Rotor Assembly, 3/4 HP, 1800 RPM, 380/460
35	11-4325-4		Kit, Motor, 3/4 HP, 380/460
36	14-3220-0		Nameplate, LCD08, 3/4 HP, 43R, 380V
37	6-4523-4		Washer, 1/4", Nylon
38	6-4235-5* 14-2883-0*		Plug, Hole, Nylon, 1/4 x 0.062 thick Z-Vent, Plastic Vent, 1/4"
39	14-8447-0		Decal, Motor Schematic

NOTE: Assemblies are no longer available. Refer to page I-3 for breakdown of assemblies and item part numbers.

* Use nylon plug (06-4235-5) for systems that require CE compliance. Use Z-Vent plug on all applications that do not require CE compliance.