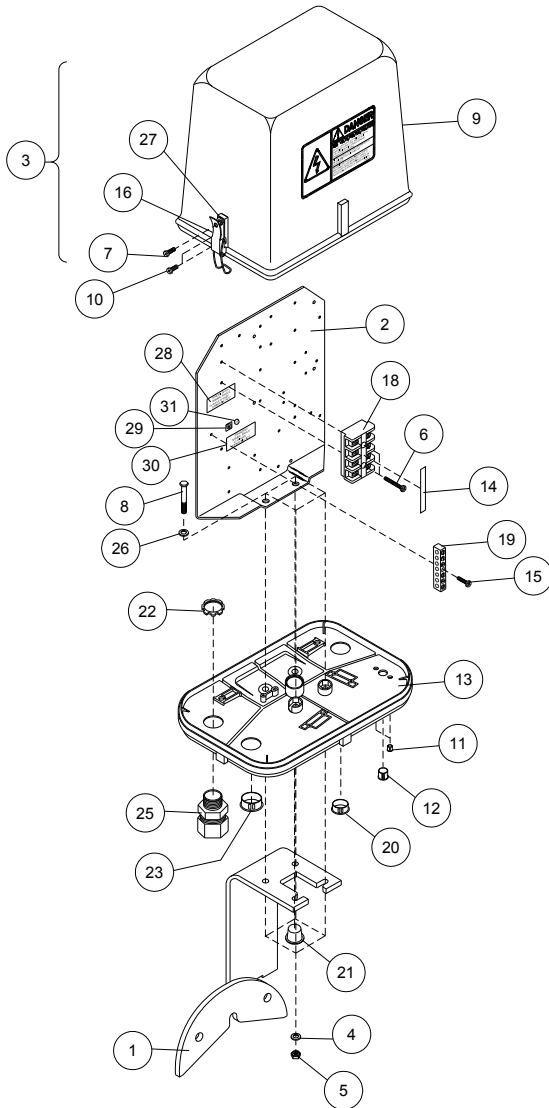


# Tower Panels

## Boost Transformer Panel, 03-8266-3



Ref.	Original Part No.	Substitute Part No.	Description
1	03-2822-9		Mount, Tower Box, Square Mount
2	03-4017-4		Plate, Starter Mount
3	03-7641-8		Shield Assy, Tower Panel, Gray
4	06-0812-5		Washer, Lock, 5/16"
5	06-0822-4		Nut, 5/16"-18, Hex
6	06-0850-5		Screw, #8-32 x 1", Ph. Pn. Hd, #23
7	06-0856-2		Screw, #6-20 x 1/2", Ph. Pan Hd, #25
8	06-3146-5		Screw, 5/16-18 x 1-1/2", Hex, Gr. 5
9	06-4208-2		Shield, Tower Box Gray, 480 Decal
10	06-4234-8		Screw, #6-20 x 3/8", Ph. Pn. Hd., #25
11	06-4235-5		Plug, Hole, Nylon, 1/4 x .062" Thick
12	06-4264-5		Plug, Hole, Nylon, 1/2"
13	06-4342-9		Base, Tower Control, Box, Gray
14	06-4467-4		Decal, Terminal Marker
15	06-4553-1		Screw, #8-32 x 3/4", Ph. Pn. Hd., #23

Ref.	Original Part No.	Substitute Part No.	Description
16	06-4822-0		Latch, Pull-Down, 3 Hole
17	09-0838-4		Connector, 3/4" w/Nut, .7-.8 Dia.
18	09-7604-3		Block, Term., 4 Pt., #CR151B46AF
19	09-7631-6		Bar, Ground Terminal, 6-#14, 6-#8
20	09-8986-3		Plug, Hole, Nyl., 7/8 Heyco, #DP-875
21	09-9020-0		Plug, Caplug, #9X
22	09-9161-2		Nut, Conduit, 3/4", Lock
23	09-9297-4		Plug, Hole, 1-1/8" Nylon
24	10-9700-5		Kit, Box, Booster Transformer
25	11-2837-0		Connector, 3/4" w/o Nut, .7-.8" Dia.
26	11-3530-0		Washer, Lock, 5/16", Internal Tooth
27	11-7429-1		Sleeve, Captive, Tower Box
28	11-9047-0		Decal, Terminal Torque, GE
29	11-7357-4		Decal, P.E., Ground Symbol
30	13-7555-0		Decal, Terminal Torque, Groundbar
31	14-8366-0		Decal, Green/Yellow, "PE"