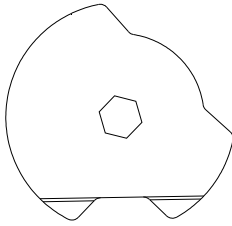


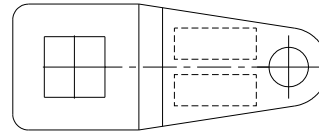


# Tower Panels

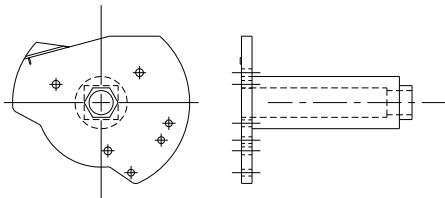
## Cams



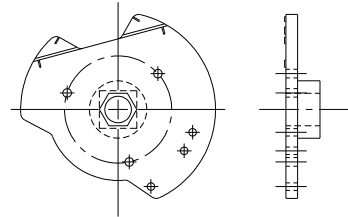
6-3751-2  
CAM, PLASTIC TOWER CONTROL PANEL



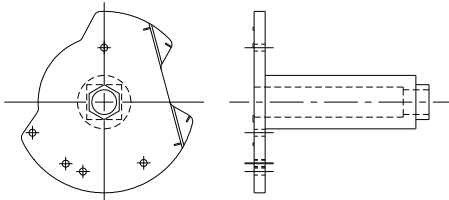
6-0460-3 ARM, CAM, TOWER CONTROL BOX



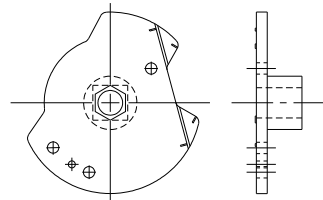
10-0030-6  
CAM, GUID., F.G., NEUTRAL CORRIDOR



10-0031-4  
CAM, SAFTY, F.G., NEUTRAL CORRIDOR



10-0057-9  
CAM, LONG, AUTO REV./STOP, ANY TWR.



10-0056-1  
CAM, SHORT, AUTO REV./STOP, ANY TWR.

Ref.	Original Part No.	Substitute Part No.	Description
1	06-0460-3		Arm, Cam, Tower Control Box
2	06-3751-2		Cam, Plastic, Tower Control Panel
3	10-0030-6		Cam, Guid. FC, Neutral Corridor
4	10-0031-4		Cam, Safety, FG, Neutral Corridor
5	10-0056-1		Cam, Short, Auto Rev/Stop, Any Tower
6	10-0057-9		Cam, Long, Auto Rev/Stop, Any Tower