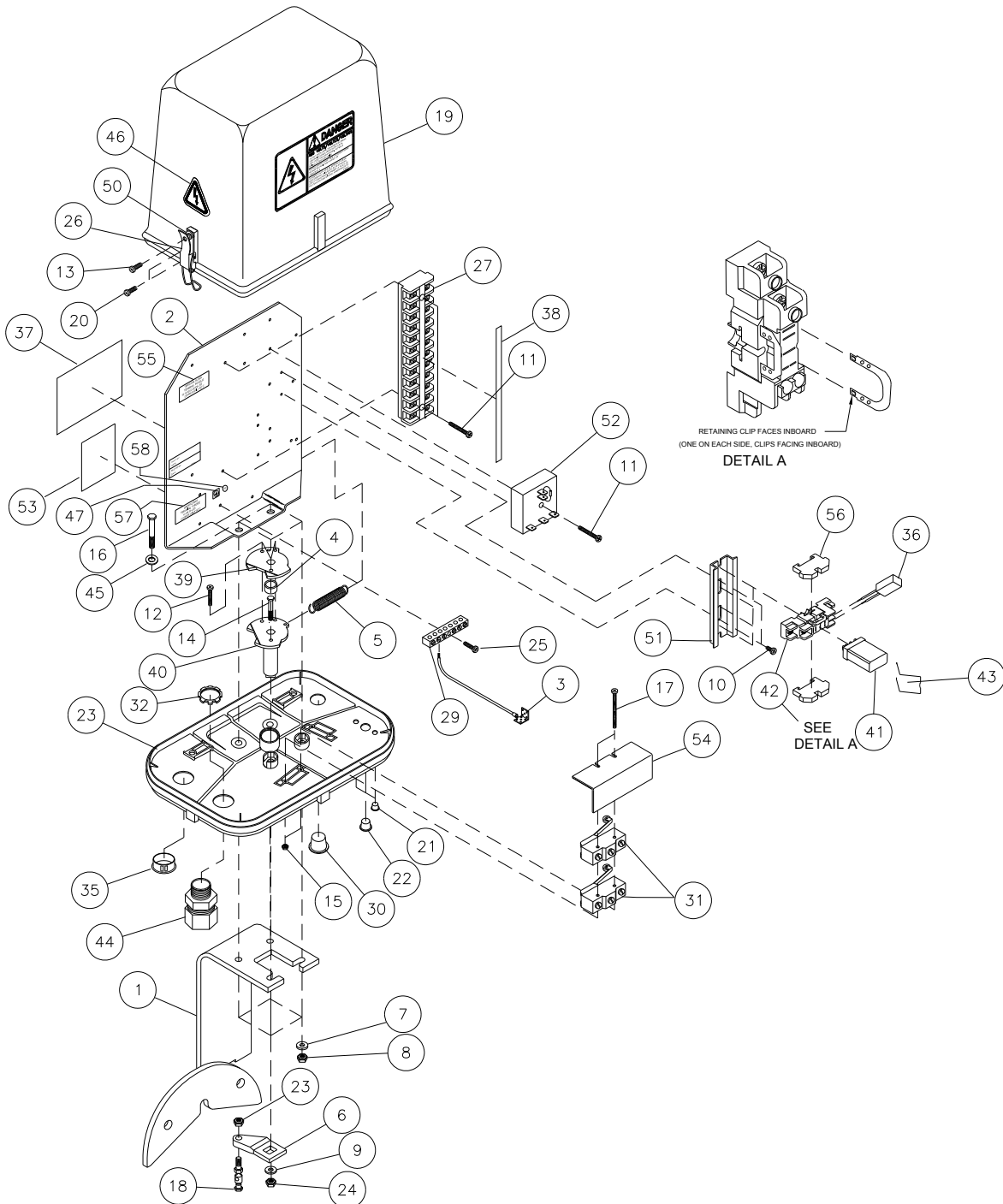


Tower Panels

Auto Rev/Stop Control Panel, Any Tower, CE, 11-8294-6





Tower Panels

Auto Rev/Stop Control Panel, Any Tower, CE, 11-8294-6, continued

Ref.	Original Part No.	Substitute Part No.	Description
1	03-2822-9		Mount Weld., Twr. Box, Sq. Mount
2	03-4017-4		Plate, Starter Mount
3	03-4629-6		Termifoil Assembly, CE
4	03-5954-7		Spacer, Cam
5	06-0212-8		Spring, Special, Plated, #E-41-C
6	06-0460-3		Arm, Cam, Tower Control Box
7	06-0812-5		Washer, Lock, 5/16"
8	06-0822-4		Nut, 5/16"-18, Hex
9	06-0842-2		Washer, Flat, 1/4"
10	06-0847-1		Screw, #8-32 x 3/8", Ph Pn Hd, #23
11	06-0850-5		Screw, #8-32 x 1", Ph. Pn. Hd, #23
12	1600827		Screw, #6-20x7/8", Ph. Pan Hd., #25
13	06-0856-2		Screw, #6-20 x 1/2", Ph.Pn Hd, #25
14	06-1580-7	11-8405-0	Screw, 1/4-20 x 1", Hex, Stainless
15	06-2200-1		Nut, 6-32, Hex
16	06-3146-5		Screw, 5/16-18 x 1-1/2", Hex, Gr. 5
17	06-3758-7		Screw, #6-32 x 2", Sl. Pn. Hd.
18	06-3910-4		Swivel, Set Screw, 1/4", 5/16" Rod
19	06-4208-2		Shield, Tower Box, Gray, 480 Decal
20	06-4234-8		Screw, #6-20 x 3/8", Ph.Pn.Hd., #25
21	06-4235-5		Plug, Hole, Nylon, 1/4 x .062" Thick
22	06-4264-5		Plug, Hole, Nylon, 1/2"
23	06-4342-9		Base, Tower Control Box, Gray
24	06-4267-8		Nut, 1/4-20, Lock, Nylon Insert
25	06-4553-1		Screw, #8-32 x 3/4", Ph.Pn.Hd., #23
26	06-4822-0		Latch, Pull-Down, 3 Hole
27	09-7602-7		Block, Term., 12 Pt., #CR151B26AF
28	09-7608-4		Term., Wire, B, #16-14
29	09-7631-6		Bar, Ground Terminal, 6-#14, 6-#8
30	09-8986-3		Plug, Hole, Nylon, 7/8, Heyco
31	16-0083-6		Switch, Micro, SPDT, 15A, 120V

Ref.	Original Part No.	Substitute Part No.	Description
32	09-9161-2		Nut, Conduit, 3/4", Lock
33	09-9211-5		Terminal, Slip-On, 16-14-1/4"
34	14-8388-0		Terminal, 1/4", Slip-On, Piggyback
35	09-9297-4		Plug, Hole, 1-1/8" Nylon
36	09-9341-0		Suppressor, RC, 200 VDC, Mod. 2
37	10-0054-6		Decal, Nameplate, Auto-Rev/Stop
38	10-0055-3		Decal, Term. Marker, Auto Rev/Stp
39	10-0056-1		Cam, Short, Auto Rev/Stop
40	10-0057-9		Cam, Long, Auto Rev/Stop
41	10-0060-3		Relay, Plug-In, SPDT
42	10-0061-1		Socket, Relay, Plug-In, 300V
43	11-1797-7		Spring, Relay Retainer, SPDT
44	11-2836-2		Connector, 3/4" w/o Nut, .6-.7" Dia.
45	11-3530-0		Washer, Lock, 5/16", Internal Tooth
46	11-7354-1		Decal, Electric Shock, ISO/CE
47	11-7357-4		Decal, Protective Earth (GRD)
48	11-7397-0		Terminal, Tubular, 14 AWG
49	11-7398-8		Terminal, Tubular, 16 AWG
50	11-7429-1		Sleeve, Captive, Tower Box
51	11-7787-2		Rail, Din, 4"
52	11-7940-7		Timer Assembly, 3.3 Sec. N.C.CE
53	11-8211-2		Decal, Comp. ID, Auto-Rev/Stp, CE
54	11-8296-4		Shield, Micro-Switch, Dual, CE
55	11-9047-0		Decal, Terminal Torque, GE
56	12-4620-0		Block, Terminal, Endstp, Screwless
57	13-7555-0		Decal, Terminal Torque, Groundbar
58	14-8366-0		Decal, Green/Yellow, "PE"
59	09-9183-6		Connector, 3/4" w/Nut (Not shown)