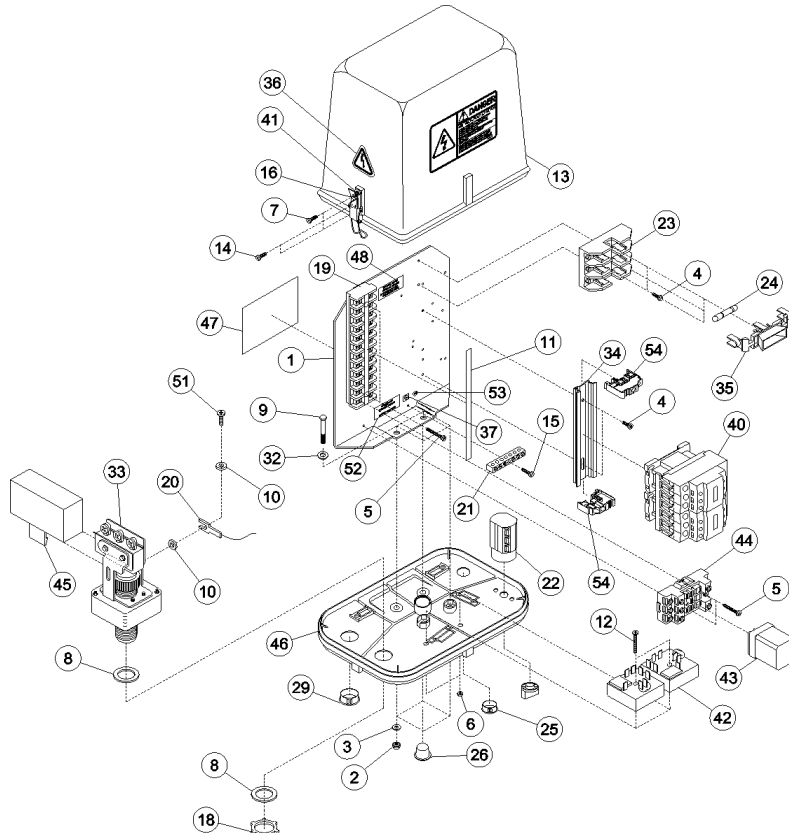




Tower Panels

Booster Pump Control Panel, CE, 11-7944-9



FUSE SIZE	GPM	L/M
10	130	492
15	200	757

Ref.	Original Part No.	Substitute Part No.	Description
1	03-4017-4		Plate, Starter Mount
2	06-0822-4		Nut, 5/16-18, Hex
3	06-0842-2		Washer, Flat, 1/4"
4	06-0847-1		Screw, #8-32 x 3/8", Ph Pn Hd, #23
5	06-0850-5		Screw, #8-32 x 1", Ph. Pn. Hd, #23
6	06-0853-9		Nut, #8-32, Hex
7	06-0856-2		Screw, #6-20 x 1/2", Ph. Pn. Hd, #25
8	06-2158-1		Washer, Reducing, 3/4" x 1/2" Cond
9	06-3146-5		Screw, 5/16-18 x 1-1/2", Hex, Gr. 5
10	06-3432-9		Washer, Lock, #8, I-Tooth
11	06-3711-6		Decal, Term. Mkr, Boost.Pump Pnl
12	06-3909-6		Screw, #8-32 x 1-1/4", Ph Pn.Hd, #23
13	06-4208-2		Shield, Tower Box, Gray, 480 Decal
14	06-4234-8		Screw, #6-20 x 3/8", Ph.Pn.Hd., #25
15	06-4553-1		Screw, #8-32 x 3/4", Ph.Pn.Hd., #23
16	06-4822-0		Latch, Pull Down, 3 Hole
17	09-0816-0		Tie, Cable, Plastic, 5-1/2" Long
18	09-9156-2		Nut, Conduit, 1/2", Lock
19	09-7602-7		Block, Term, 12Pt, #CR151B26AF
20	09-7608-4		Term., Wire, B, #16-14, Spade 8, Ins
21	09-7631-6		Bar, Ground Terminal, 6-#14, 6-#8
22	09-8866-7		Switch, Rotary Pwr, 6 PST, 10 AMP
23	09-8923-6		Fuse Holder/600V, 30A, 3 Pole
24	09-8969-9	16-0003-5	Fuse, 6 AMP, 500 Volt, D.E.T.D.
25	09-8986-3		Plug, Hole, Nylon, 7/8", Heyco
26	09-9020-0		Plug, Caplug, #9X
27	09-9211-5		Terminal, Slip-On, 16-14-1/4"

Ref.	Original Part No.	Substitute Part No.	Description
28	14-8388-0		Terminal, 1/4", Slip-On, Piggyback
29	09-9297-4		Plug, Hole, 1-1/8" Nylon
30	11-0001-5		Connector, Pushin, 1/4" x 1/8", NPT
31	11-0003-1		Tee, Pushin, 1/4" Tube
32	11-3530-0		Washer, Lock, 5/16", Int. Tooth
33	11-3570-6		Switch, Pressure, 2-50, PSI, SPDT
34	11-6044-9		Rail, Din, 5.875"
35	11-7352-5		Cover, Fuseholder, CE
36	11-7354-1		Decal, Electric Shock, ISO/CE
37	11-7357-4		Decal, Protective Earth (GRD)
38	11-7397-0		Terminal, Tubular, 14 AWG
39	11-7398-8		Terminal, Tubular, 16 AWG
40	11-8921-0		Contact, 3P, Rev. Interlock, w/Aux.
41	11-7429-1		Sleeve, Captive, Tower Box
42	11-7941-5		Timer Assy, .5 Sec. SPDT, 10A, CE
43	11-7942-3		Relay, 3 PDT, Enclosed, 120V, CE
44	11-7943-1		Socket, 11 Blade, Sq. Din Rail Mt. CE
45	11-8080-1		Cover, Terminal, Pressure Switch
46	11-8280-7		Base, Booster, Pump Box, CE
47	11-8282-3		Decal, Nameplate, B.P. Panel, CE
48	11-9047-0		Decal, Terminal Torque, GE
49	12-9741-0		Instructions, Booster Pump Instruct.
50	13-0684-0		Tubing, Nylon, 1/4" O.D. x 1'
51	13-4355-0		Screw, #8-32, 1/4", Ph. Pn. Hd. #23
52	13-7555-0		Decal, Terminal Torque, Groundbar
53	14-8366-0		Decal, Green/Yellow, "PE"
54	11-7467-1		Rail, Din, End Stop
55	16-0003-5		Fuse, 10A, 500V, D.E.T.D.