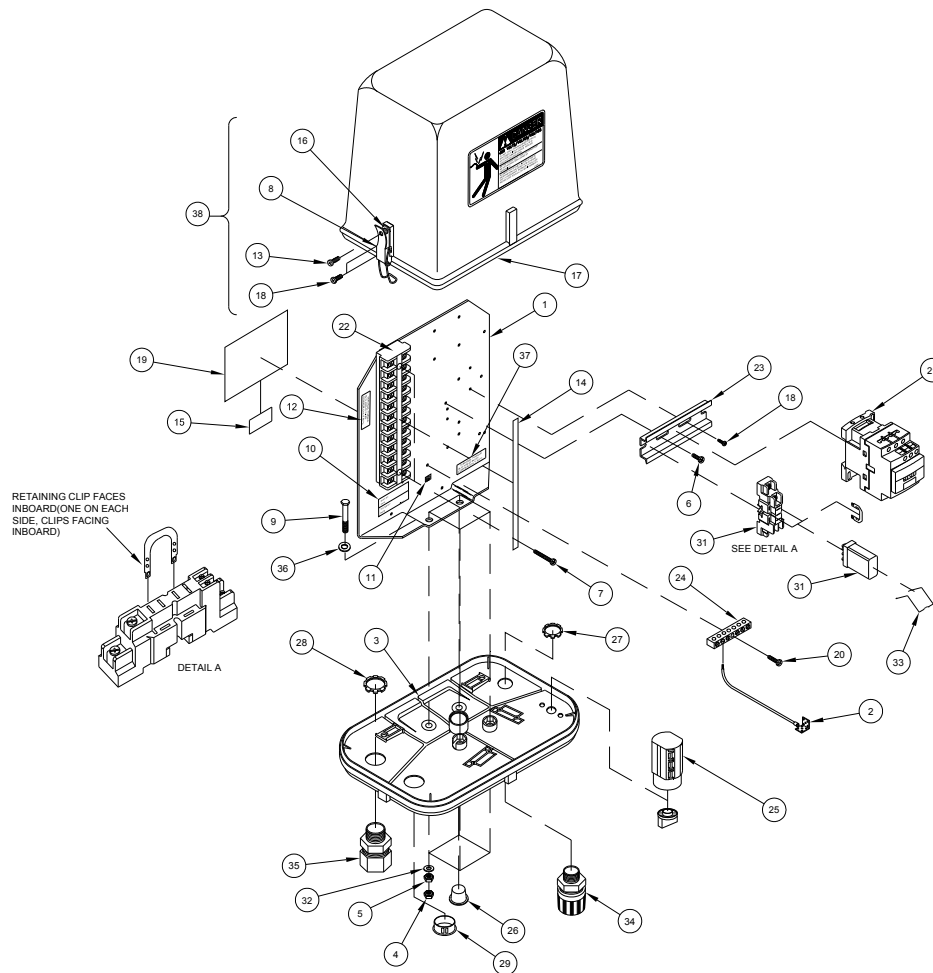




Tower Panels

Tower Control Panel, Last, 10 Wire, 03-7988-3



Ref.	Original Part No.	Substitute Part No.	Description
1	03-4017-4		Plate, Starter Mount
2	03-4629-6		Termifoil Assembly
3	03-7763-0		Base, Tower Box, Threaded
4	06-0262-3		Nut, 5/16-18, Lock, Nylon Insert
5	06-0822-4		Nut, 5/16-18, Hex
6	06-0847-1		Screw, #8-32 x 3/8", Ph. Pn. Hd #23
7	06-0850-5		Screw, #8-32 x 1", Ph. Pn. Hd., #23
8	06-4822-0		Latch, Pull Down, 3 Hole
9	06-3146-5		Screw, #5/16-18 x 1-1/2", Hex, Gr. 5
10	06-3662-1		Decal, Built tested
11	11-7357-4		Decal, P.E., Ground Symbol
12	11-9047-0		Decal, Terminal Torque, GE
13	06-0856-2		Screw, #6-20 x 1/2", Ph. Pn. Hd #25
14	06-4074-8		Decal, Term. Marker, Last, 10W
15	11-7960-5		Decal, ETL
16	11-7429-1		Sleeve, Captive, Tower Box
17	06-4208-2		Shield, Tower Box, Gray, 480 Decal
18	06-4234-8		Screw, #6-20 x 3/8", Ph. Pn. Hd #25
19	06-4446-8		Decal, Namepl., Twr. Ctrl. Pnl., Last
20	06-4553-1		Screw, #8-32 x 3/4", Ph. Pn. Hd #23

Ref.	Original Part No.	Substitute Part No.	Description
21	12-0743-0		Contact, Tower, 18A, NC,NO,CE
22	09-7602-7		Block, Term,12Pt, #CR151B26AF
23	11-7787-2		Rail, Din 4"
24	09-7631-6		Bar, Ground Terminal ,6-#14, 6-#8
25	09-8866-7		Switch, Rotary Power, 6 PST, 10A
26	09-9020-0		Plug, Caplug, #9X
27	09-9156-2		Nut, Conduit, 1/2", Lock
28	09-9161-2		Nut, Conduit, 3/4", Lock
29	09-9297-4		Plug, Hole, 1-1/8" Nylon
30	10-0060-3		Relay, Plug-In, Sing. PL/DBL Thro
31	10-0061-1		Socket, Relay, Plug-In
32	06-0842-2		Washer, Flat, 1/4"
33	11-1797-7		Spring, Relay Retainer, SPDT
34	11-2835-4		Connector, 1/2" w/o Nut, .37-.5" Dia.
35	11-2836-2		Connector, 3/4" w/o Nut, .6-.7" Dia.
36	11-3530-0		Washer, Lock, 5/16", Int. Tooth
37	13-7555-0		Decal, Terminal Torque, Groundbar
38	03-7641-8		Shield Assy, Tower Panel, Gray